

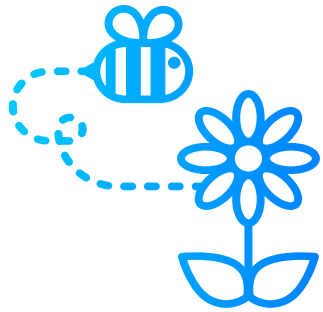


North Ray Solar Farm Community Update February 2026



TotalEnergies

Welcome to our February update on North Ray Solar Farm, a proposed 98MW solar farm located northwest of Ludborough, East Lindsey. In this update we'll share a summary of the consultation feedback, how it has shaped our plans, and the next steps in the project timeline.



Since our pre-application consultation closed on 6 November, we've been carefully considering the feedback we received alongside technical and environmental assessments. We've made several key changes based on community feedback.

Our priority is to deliver a well-designed solar farm that balances renewable energy generation with local character, biodiversity enhancement, and genuine community benefits. We're grateful to everyone who took part in our consultation by attending the in-person events, speaking to the project team, and sending in feedback.

If you'd like more information, please contact our team at the details at the bottom of this page or visit our website.

Why is North Ray needed?

The UK needs to produce more of its own energy so that people and businesses aren't as exposed to rising bills or changes in global fuel prices. Becoming more self sufficient also means **relying less on fossil fuels** and making sure we have **enough power for the future**.

To secure a reliable domestic supply, respond to growing demand, and cut carbon emissions, **older forms of generation must be replaced with clean, homegrown energy**. Solar is central to this transition. It's proven, cost-effective, and can be deployed quickly - helping the UK reach its goal of tripling solar capacity.

This 98MW solar farm is part of that effort. Once built, **it will generate enough renewable electricity to power more than 45,000 homes every year**, reducing reliance on imported energy and supporting the UK's commitment to a cleaner, more resilient energy future.



Responding to local suggestions

Over recent months, we've been listening closely to your thoughts and concerns.

Here's how your feedback has made a difference:



Creation of a community orchard

A **community orchard** is now included on the eastern part of the site, closest to Ludborough Village. This will create a small green space that local residents can enjoy, while also providing a buffer area. The orchard will be maintained by TotalEnergies for the full operational life of North Ray, and we are in discussion with Parish Councils on how it can benefit the community long-term.



Increasing distance from Ludborough

Panels have also been **removed** from the eastern border to the north of Ludborough in response to consultation feedback. This change reduces visibility in this area and provides a larger buffer between the project and properties.



Extending Public Rights of Way buffer

Following community feedback, we have refined the project layout to include a **30-metre offset** from all Public Rights of Way (PRoW).

Perimeter fencing has also been adjusted so that it aligns more closely with existing field boundaries and avoids creating visual intrusion. These changes allow protected species to continue to move naturally across the land.

These updates form part of our Biodiversity Net Gain approach. The PRoW offset creates space for new planting, hedgerow enhancements and habitat corridors alongside the paths. Combined with measures elsewhere on the site such as new grassland areas and improved drainage features, these changes help support local wildlife, increase habitat diversity and contribute to long-term environmental benefits for the area.



Managing water safely on site

We understand potential flooding was a concern locally and have taken a careful approach to how water naturally moves across the land. Although most of the site has a very **low risk of surface water flooding**, a few small areas can hold water during heavy rain because of dips in the ground and existing field drains and ditches.

The solar layout works with the natural drainage patterns, and since our consultation, a **new basin** has also been added to mitigate run-off in the northeast parcel. New natural drainage features such as filter strips and swales will also be added between and around the panel areas to slow the movement of water, help it soak into the ground, and create extra habitats for wildlife.



Minimising glint and glare

To limit any potential glint and glare from the solar panels, **the number of panels in the southern section of the site has been reduced**. Panels identified through modelling as having the potential to cause noticeable glare for nearby homes or road users have been removed from the design.



Protecting local history

A recent geophysical survey identified a ring ditch about 16 metres wide on the western side of the site. While its exact age isn't known, it may be linked to a Bronze Age burial mound, making it an important historic feature.

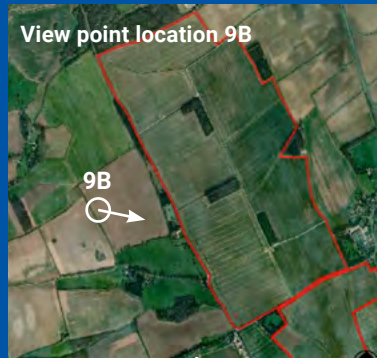
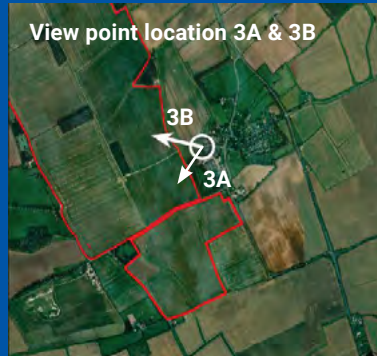
To protect this area, **no development will take place on or near the ring ditch**. A 20 metre buffer has also been added around it to safeguard both the feature itself and any other archaeological remains that may lie nearby.

What will North Ray look like?

As part of our application visualisations have been produced to show how North Ray Solar would appear once constructed. These images have been produced in line with industry standard guidance for Landscape and Visual Impact Assessment (LVIA), using verified photography captured from publicly accessible viewpoints around the site. This methodology ensures that distances, heights and viewing angles are accurately represented.

To create the visualisations, high resolution baseline photographs are taken first. The final site layout is then modelled using precise survey data, accurately reflecting the position and dimensions of the solar panels, fencing, planting and site topography. The 3D model is then integrated with the baseline photography.

Each visual shows today's view and how it would look once North Ray Solar is in place with new planting established.



9B



9B existing viewpoint



9B viewpoint after 15 years

3B



3B existing view point



3B view point after 15 years

3A



3A existing view point



3A view point after 15 years



Community Benefits

As part of the project, we will set up a **Community Benefit Fund** (index-linked, £70,000 per annum) for the entire operational lifetime of the solar farm to support local initiatives.

The fund is designed to deliver meaningful benefits for communities near the project. Consultation feedback suggested:



Improvements to village halls and spaces for community activities



Support for school projects, like gardening and wildlife education



Help with broadband installation in rural areas



Grants for church repairs and local facilities



Enhancing walking and cycling routes and promoting wellbeing

Please do not hesitate to get in touch with any further ideas at the contact information on the next page.

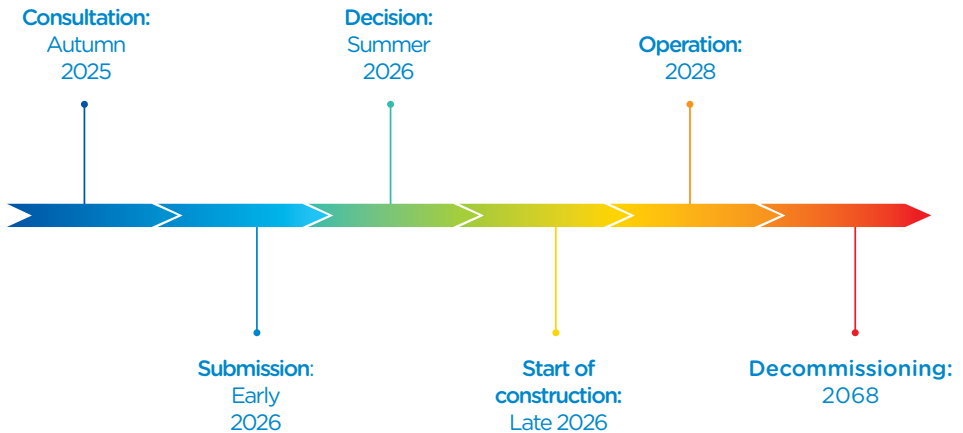
Looking Ahead - timescale



We are currently preparing to submit our planning application, which is expected in **late February**. As part of this submission, we are producing an **Environmental Statement (ES)**. This document brings together the findings of a detailed Environmental Impact Assessment (EIA) - a process used to thoroughly understand how the project could interact with the local environment.

The Environmental Statement will cover a wide range of topics, including landscape, ecology, heritage, flood risk, traffic, and noise. Each area is being assessed by experienced specialists using recognised industry standards to identify any potential effects and to set out the measures we will take to avoid or manage them.

Following submission of the planning application, East Lindsey District Council will conduct its **own statutory consultation** before determining the application. This will provide residents, stakeholders and other interested parties with another opportunity to comment on our proposals.



Get in touch

If you have any questions or wish to discuss the project with us further, you can contact us via email at info@northraysolarfarm.co.uk or by calling **0203 667 4505**.