

TotalEnergies



Pure Hourly Renewable

This product provides evidence of your **renewable energy** matching on an **hourly basis**. It goes beyond annual matching and provides **real-time alignment** with **clean energy sources**.

Available to Half-Hourly Meters



Benefits of Hourly Matching

Sustainability:

Identify low carbon-demand intervals on the grid to shift consumption behaviour and have a real impact.

Future Proof:

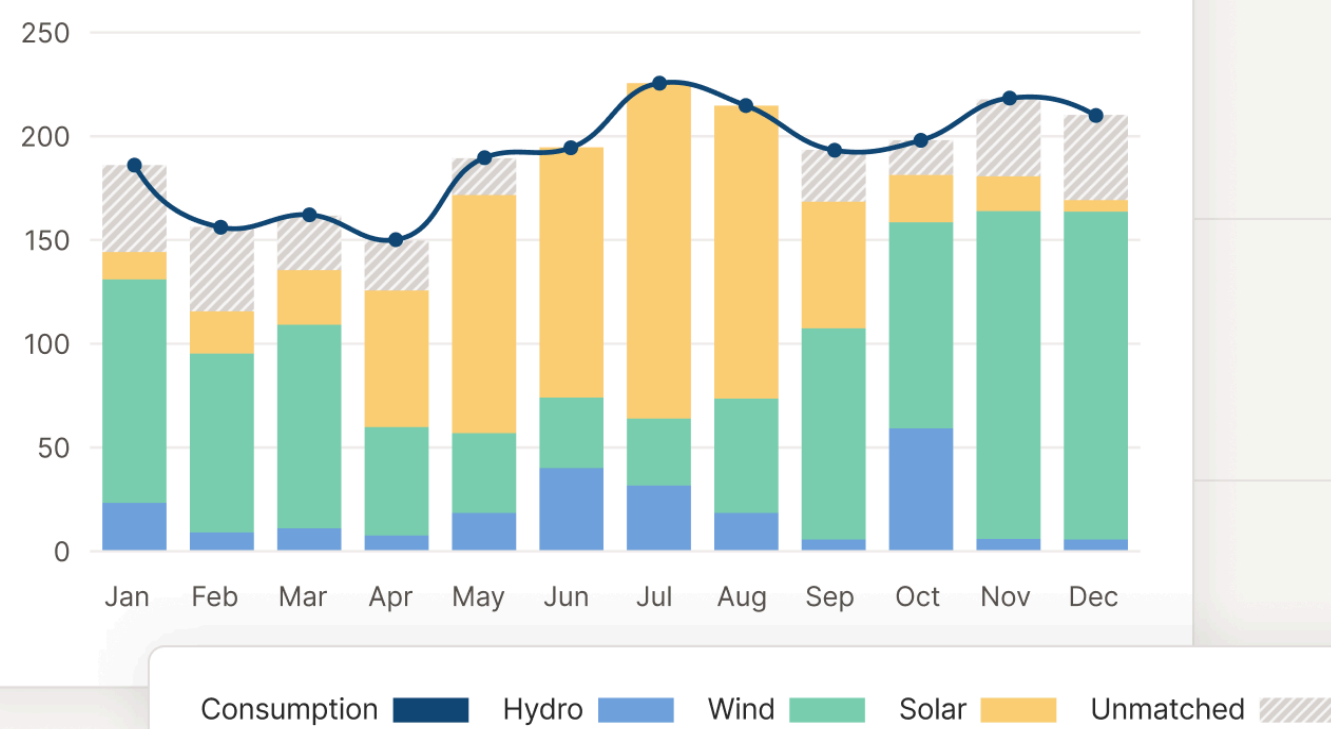
Hourly matching prepares for a more granular renewable energy market where renewable supply is better matched with required demand.

Reputation:

Demonstrating a commitment to renewable energy enhances your reputation among customers, investors, and the wider public.

Matching over time

01 Jan - 31 Dec



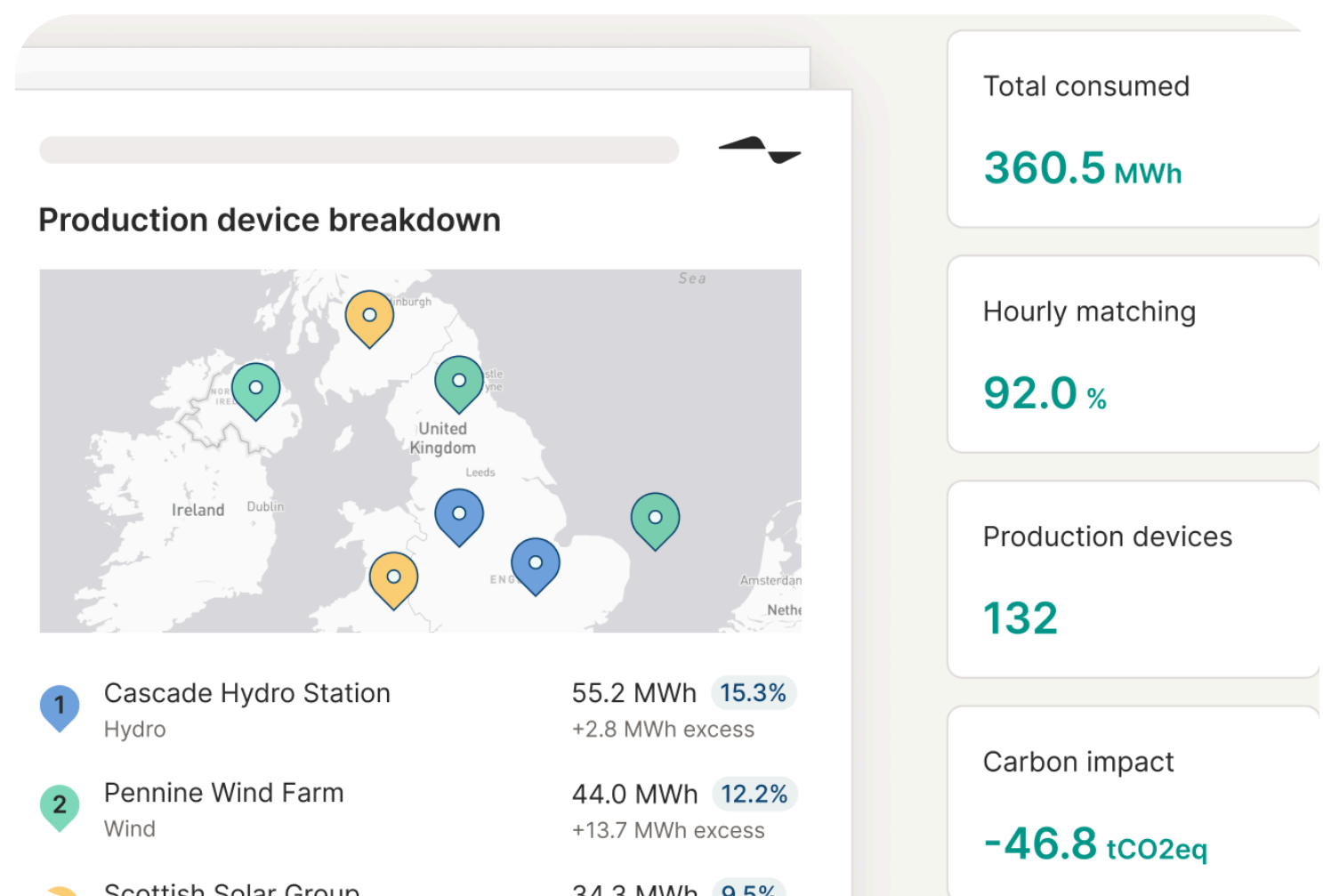
How Hourly Matching Works:

Data Collection: Collects information on your energy consumption patterns and renewable energy production using smart meters and grid data.

Matching Process: Matches generation from renewable assets generated within the same hour as your consumption to provide improved traceability.

Verification: Ensures accurate matching through third-party validation using Renewable Energy Guarantees of Origin (REGOs).

Reporting: Generates transparent reports evidencing your renewable energy usage



Total consumed

360.5 MWh

Hourly matching

92.0%

Production devices

132

Carbon impact

-46.8 tCO2eq