



## OEM APPROVALS

OEM SPECIFICATION	NATERIA MP 40	NATERIA MJ 40	NATERIA MX 40	COOLANT	
▶ JENBACHER	Type 2 & 3 (gas)	☑ (gas A, CAT)	☑ (gas B, C)	In progress (gas A, CAT)	
	Type 4 A & B (gas) Type 6 C & E (gas)	☑ (gas A, CAT)		In progress (gas A, CAT)	☑ Coolelf SUPRA ☑ Coolelf CHP SUPRA
	Type 4 C & E (gas) Type 6 F, G, H (gas)			In progress (gas A, CAT)	
▶ CATERPILLAR ENERGY SOLUTIONS	Low Ash 0199-99-12105 (CAT) 0199-99-2105 (MWM)	☑		In progress	☑ Coolelf SUPRA ☑ Coolelf MDX
	Medium Ash 0199-99-12105 (CAT) 0199-99-2105 (MWM)		☑		
▶ WAUKESHA	Cogeneration	☑		In progress	
▶ CUMMINS	Natural gas			In progress	
▶ WÄRTSILÄ	W34/50SG & DF			In progress	☑ WT SUPRA
▶ MTU	400BR Series	☑ (All gases)	☑ (Sour gases)		☑ Coolelf SUPRA ☑ Coolelf MDX
	4000 Series	☑ (All gases)	☑ (Sour gases)		
▶ ROLLS-ROYCE	K-G1, -G2 and -G3 K-G4 BV-G	☑			☑ WT SUPRA
▶ MAN TRUCK & BUS AG	Natural gas M3271-2	☑			☑ Coolelf MDX
	Special gas M3271-4	☑	☑		
▶ DEUTZ	0199-99-01213/1 (all engines)	☑			☑ Coolelf SUPRA
▶ TEDOM	Natural gas	☑			☑ Coolelf SUPRA
	Biogas		☑		
▶ KHI	Natural gas			In progress	
▶ MHIET	Natural gas	☑		In progress	

### A major player

With our production, supply chain and commercial presence in more than 150 countries, we deliver a full range of lubricants.

### Support and partnership

Thanks to local technical presence, we provide a high level of service to optimize your Total cost of Ownership.

### References & OEMs

Total Lubrificants cooperates with equipment manufacturers to create high-technology products for optimal performance and production of your machinery.

5 good reasons for choosing TOTAL

### Innovation & Research

Total Lubrificants invests in biotechnologies to find the most suitable components to reach energy efficiency through formulations designed in our Research Centers.

### Quality and environment

Total Lubrificants ISO 9001 certification is the guarantee of a long term commitment to quality. From the initial design stage, our R&D teams seek to develop products that minimize toxicity risks and environmental impact.

**TOTAL Austria GmbH**  
 Modecenterstraße 17 Obj.1 / OG 2  
 1110 Wien  
 E-Mail: [ms.industrie-at@total.com](mailto:ms.industrie-at@total.com)  
 Tel: 01 616 46 11-0  
[www.total.co.at](http://www.total.co.at)

Safety Data Sheets are available at [quickfds.com](http://quickfds.com)  
[lubricants.total.com](http://lubricants.total.com)

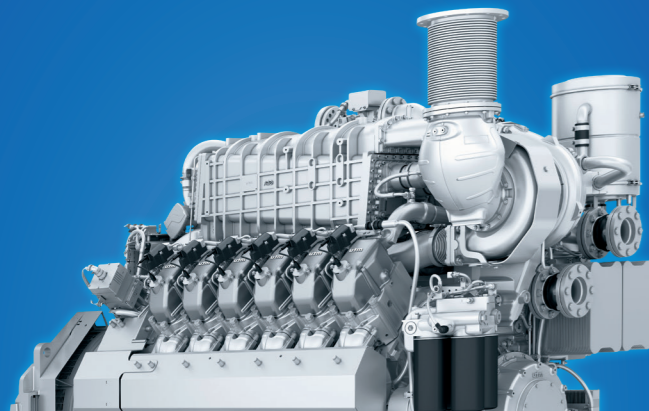


## GAS ENGINES Unlocking value through our solutions



11/2018 - TOTAL Lubrificants SA 552 006 454 RCS Nanterre - Photos: 123RF, Erdgas Gasgeneseit, Design: GOLDEN design





## Responsive performance, Long-lasting protection

We have carefully selected our base oils and additives to meet leading **engine manufacturers' requirements** and keep your engine reliable even under cyclic peak loading conditions.

Special emphasis is put on the low-deposit tendency of our formulations to ensure **superior engine cleanliness**.

NATERIA gas engine oils and SUPRA coolants also provide enhanced wear and corrosion resistance **to better protect your engine**.

## Reduced costs, Increased productivity

Our latest engine oil and coolant technologies are designed to deliver **extended service life**, even with the most aggressive gas fuels (H<sub>2</sub>S, moisture, contaminants).

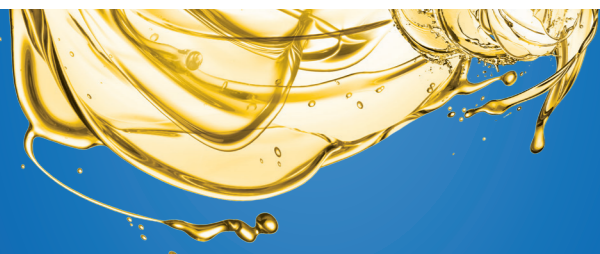
Combined with ANAC oil and coolant monitoring services, we help you get a comprehensive diagnosis of your equipment and determine **the optimal drain interval**.

Benefit from our know-how to maximize the availability of your engine and drive down your operating costs.

## Global partner, Local support

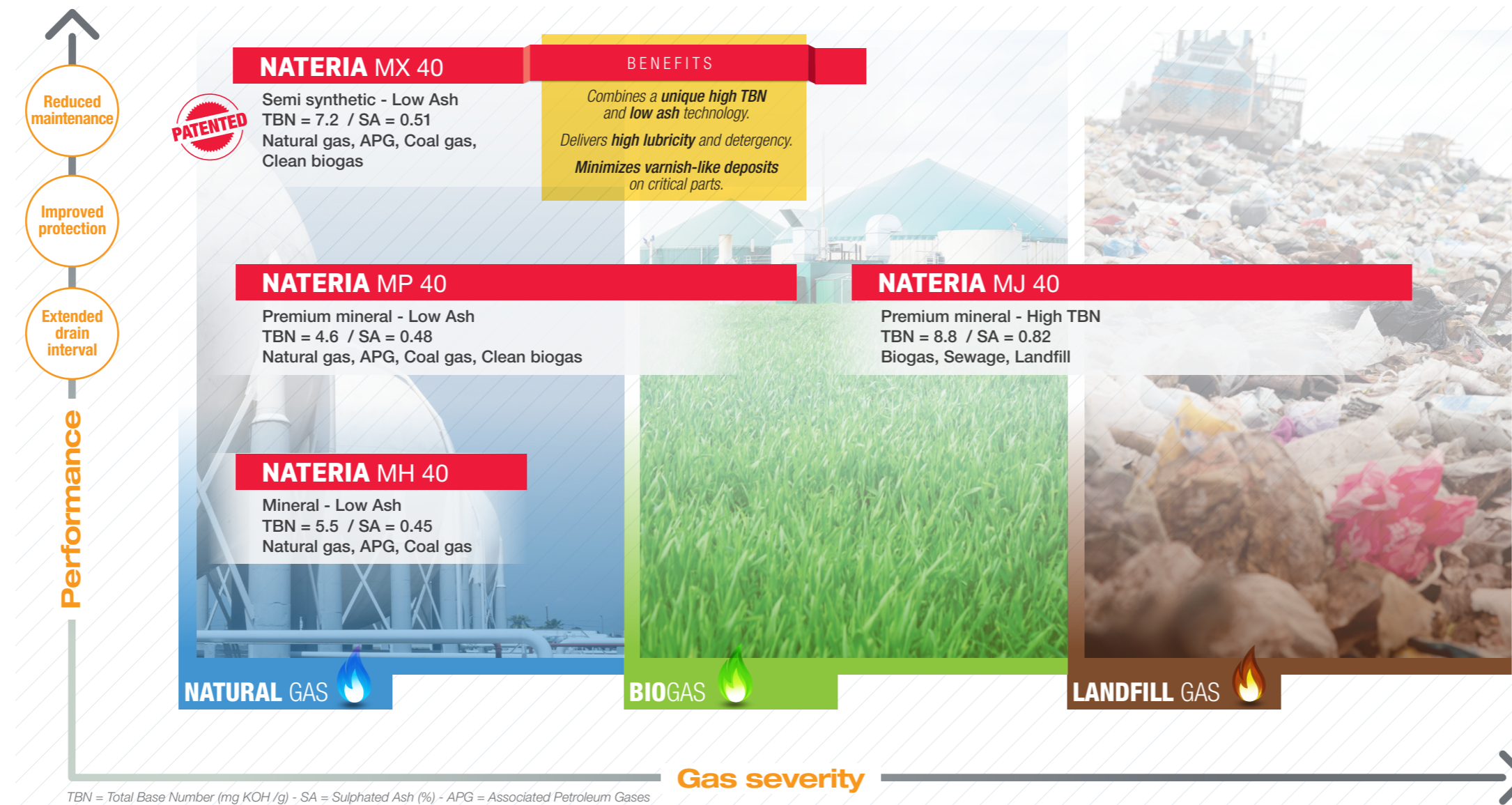
TOTAL is present in more than 130 countries. With **dedicated supply chains in most countries**, you can count on TOTAL affiliates to deliver on time in most remote locations.

We provide **technical support** such as oil diagnosis guidance and management of waste oil. You can rely on our field engineers to advise you on the best lubricant choice for your engine.



## NATERIA

Enhancing performance and productivity



TBN = Total Base Number (mg KOH/g) - SA = Sulphated Ash (%) - APG = Associated Petroleum Gases

### Special applications

#### NATERIA MP 50

- Advanced gas engine oil suitable for natural gas fueled or dual fuel engines operating in hot climates
- Approved by MAN Energy Solutions for 20V35/44G engine series

#### NATERIA V 40

- Ashless mineral gas engine oil for use in 2-cycle and 4-cycle gas engines as well as gas compressors

From gas field production through to cogeneration plants, TOTAL is your **proximity partner** for gas engine lubrication and care.

We provide **a complete lubrication solution** for your stationary gas engine.

- A combined offer of premium gas engine oils and coolants to **maximize engine life** and efficiency
- Dedicated services to monitoring the condition of your engine and to **optimizing your drain interval**



Put your trust in TOTAL teams to keep your engine up and running and **boost your earnings!**

## SUPRA

Bringing protection in all conditions

SUPRA long-life organic coolants stand among the most recognized coolant brands worldwide for their **advanced performance** and **exceptional service life**.

- **COOLELF SUPRA** (ready-mixed coolant)
- **GLACELF SUPRA** (antifreeze)

**Improved engine cooling**

- Optimum heat transfer
- Low-deposit-forming tendency

**Extended drain interval**

- Enhanced formulation against freezing and boiling
- Long-lasting corrosion inhibitors

**Increased equipment durability**

- Superior protection of the cylinders at high temperatures
- Corrosion and cavitation prevention

## ANAC

Making the difference

Total's worldwide oil monitoring program, **ANAC**, has been helping engine operators for years in **reducing their maintenance costs** while **increasing equipment reliability**.

**ANAC GAS**

Monitoring of gas engine oils condition and engine wear. Recommended for engines operating on natural gas, landfill gas, sewage gas or biogas.

**ANAC COOLANT**

Monitoring of in-service coolants and cooling systems. Recommended for all engine types.

- Over 20 years' experience in gas engine oil and coolant monitoring
- Fresh sample analysed with respect to engine historical data
- Diagnosis based on engine manufacturers' condemning limits
- Comments on diagnosis and corrective actions provided by our field engineers
- Reports available in 19 languages
- Secure extranet to access your data (compatible with smartphones and tablets)