

LUBRILOG
LUBRICATION ENGINEERING



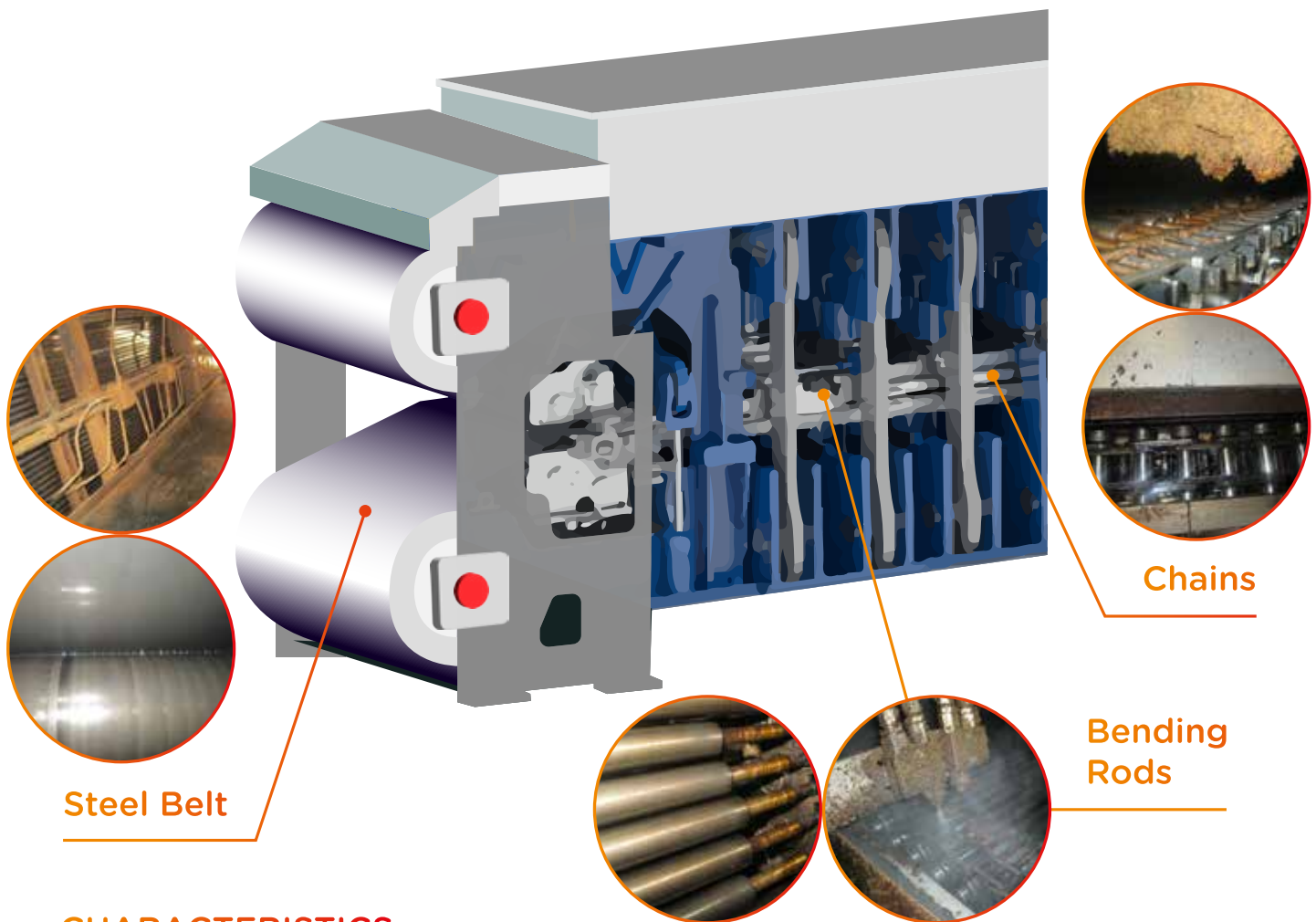
Wood Based Panel Industry



TotalEnergies

1

Estar oils for continuous press



Steel Belt

Chains

Bending Rods

CHARACTERISTICS

Products	Application	Base Oil	Kinematic Viscosity @ 40°C (mm ² /s)	Density	Flash Point (°C)	Temperature Range (°C)	
						Min	Max
Estar Band Oil 260	Steel belt & chains*	Full synthetic ester	260	0,96	>280	-35	280
Estar Chain Oil 100 NF	Bending rods & chains	Full synthetic ester	100	0,97	>280	-30	280

(* Depending on the type of continuous press)

ADVANTAGES

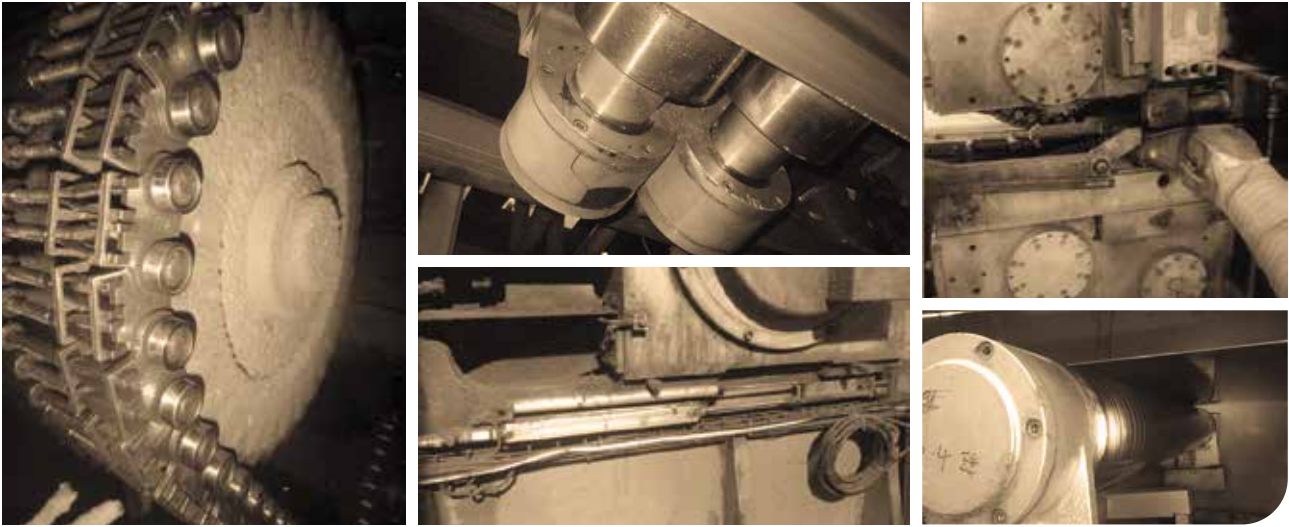
- + High flash point
- + Very low coking residues
- + High stability under high temperature
- + Excellent protection against corrosion
- + Low evaporation rate
- + High antiwear properties



Fully compatible for continuous press of OEMS like Siempelkamp Dieffenbacher, Yalian, SWPM and others.

2

Fluolog greases for extreme temperatures



Specific fluorinated greases with outstanding performances :

- (+) Exceptional thermal stability
- (+) Extend lubrication intervals
- (+) Non flammable
- (+) Excellent chemical inertness vs. gas and aggressive liquids

CHARACTERISTICS

Products	Application	NLGI	Kinematic Viscosity @ 40°C (mm ² /s)	Base Oil	Thickener	Temperature Range (°C)	
						Min	Max
Fluolog SFG 420	Roller bearing steel belt Bearing of rolling rod infeed Rolling rod sprocket bearing	2	420	PFPE	PTFE	-30	260
Fluolog SFG 421	Shaft bearing heating plate	1	420	PFPE	PTFE	-30	260

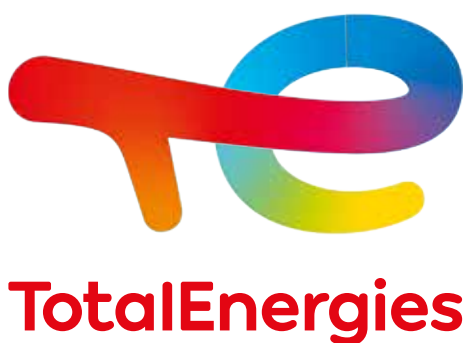
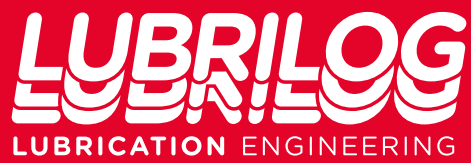
3

Additional greases

CHARACTERISTICS

Products	Application	NLGI	Kinematic Viscosity @ 40°C (mm ² /s)	Base Oil	Thickener	Temperature Range (°C)	
						Min	Max
Starlog GM 500	Infeed/Outfeed drum bearing	1	460	Mineral	PU	-20	180
Lubrilog LX 1500 GM*	Plain bearing for drum bearing housing	2	1500	Mineral	Li	-20	120
Grakote G 1*	Press frame guiding sides	1	100	Semi-Synthetic	-	-30	1000

(*) with solid lubricant



www.lubrilog.fr



TotalEnergies Industry Solutions



Contact us for more information :

Lubrilog SAS

Z.I. des Chasses, 18 rue Nicolas Appert
BP 60261 - F. 26106 Romans Cedex



+33 (0)4 75 45 26 00



contact@lubrilog.fr