

## REGENERATING AND RE-BOOSTING CORAL

**H**uman activity and global warming are threatening coral reefs. In partnership with Qatar University and France-based marine biodiversity company, Seaboost, Total is working on the **REEF** innovative solution to restore degraded corals. **REEF** structures are designed to mimic the places where corals grow in their natural habitat and are settled under water to **boost natural colonization of degraded corals.**

Want to know more? [Click here to the full article](#)

## TOTAL AND GOOGLE CLOUD DEVELOP SOLAR MAPPER

In October 2020, Total and Google Cloud have pooled their expertise to jointly develop an innovative tool, **Solar Mapper**, which aims at accelerating the deployment of solar panels for individuals by providing an accurate and rapid estimate of the solar energy potential of their homes, first in Europe and then worldwide. **Solar Mapper** uses brand-new artificial intelligence algorithms that provide better results than current tools, especially by improving:

- the quality of the data extracted from satellite images;
- the sharpness of the estimation of the solar potential;
- the relevance of the technology to be installed;
- the global geographical coverage of the tool.



“**SOLAR MAPPER WILL ENABLE TOTAL TO FASTER DEPLOY SOLAR PANELS ON THE HOUSES ROOFS, IN ORDER TO PROVIDE ITS CUSTOMERS WITH MORE AFFORDABLE AND MORE ACCESSIBLE SOLAR ENERGY.**”

EDITORIAL



## Daniel ALVAREZ Country Chair, Total Liban

“Safe” is a word we have all heard many times in the past few months as the pandemic expanded its spread among the Lebanese society. The “safe” concept certainly applies to this edition of our newsletter as we are sharing with you an overview of our efforts towards ensuring a safe service from storage till delivery, at the service stations and the warehouse. Likewise, road safety is one of our social responsibility pillars, which we promote among the public, the petroleum trucks

drivers and transporters. On the other hand, and part of its environmental approach, Total is partnering with key leaders to launch innovative solutions targeting ecosystems that are being deteriorated and the deployment of renewable energies. In Lebanon, our affiliate has taken on the challenge of solar energy by equipping the service stations with photovoltaic panels, positioning ourselves as the largest network of solar service stations in the country.

DISCOVER MORE NEWS  
IN THIS NEWSLETTER!



## SAFE AND SOUND!

**P**reserve your distance, preserve your life, and make sure not to drive in the blind spot areas where the other drivers may not see you. Before hitting the road, verify main checkpoints in your vehicle via our **Total Services App**, and enjoy peace of mind during your journey!





## AN EXPERIENCE WITH A LOT OF CARE!



It takes devotion and hard work to manage petroleum facilities. Every detail at our service stations and warehouse is designed to ensure **safety, quality, and our environmentally friendly approach.**

Did you know that all the product **discharge pipes** and **storage tanks** at the service stations are **double walled** to avoid soil pollution while, at the warehouse, all **ground areas** that could be exposed to hydrocarbon spills are **waterproof**?

[Watch the movie and discover more!](#)



## SAFETY AND QUALITY AT OUR CLIENTS' DOORSTEPS

Have you ever wondered how we ensure a safe and quality service at our clients' premises?

Our warehouses are operated as per the **highest standards**: meters are installed to **control fuel** quantities while loading the trucks and our **employees are trained** to carry our lubricants by forklifts for more safety within the warehouse.

Also, a professional service means **safety during transport and delivery**. Our fuel trucks are GPS controlled and all the safety requirements are applied while delivering our **premium fuel and lubricants**.

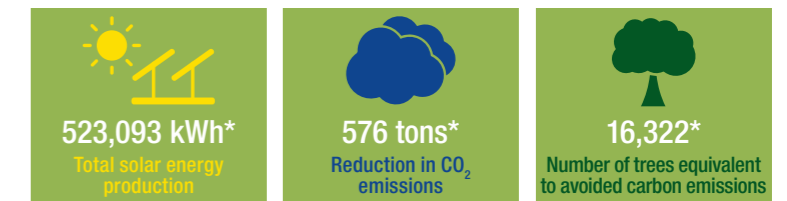
[Discover our efforts from storage till delivery!](#)



## SUSTAINABLE ENERGY, SUSTAINABLE FUTURE!

Armed with Total group know-how and expertise, Total Liban is adopting renewable energy solutions in Lebanon. With **23 solar service stations** in its record, Total Liban has the **largest network of solar service stations** in the country!

Want to know more? [Click here!](#)



\* Total Liban solar service stations figures till February 2021.



## CONGRATS!

Part of our **road safety** commitment, the **yearly safe driving challenge** had been organized targeting 8 transporters and 67 drivers. Based on an evaluation of the safe behavior on the roads, we were pleased to announce the **best drivers and transporters**:

- Transporters' category: 1<sup>st</sup> prize: NTM; 2<sup>nd</sup> prize: UTS
- DAFA\* drivers' category: 1<sup>st</sup> prize: Elie Hafed; 2<sup>nd</sup> prize: Jean Dagher
- PATROM\*\* drivers' category: 1<sup>st</sup> prize: Youssef Irani; 2<sup>nd</sup> prize: Housam Irani

\*Diesel delivery service by Total Liban

\*\*PATROM: transporters certified by Total Liban



## WELCOME TO TOTAL METN EXPRESS

The **new TOTAL Metn Express service station** has landed near you on the Metn highway! Make sure to pass by if you are around the Metn area to benefit from the **wide range of high-quality products and services** offered at the station.



## SHE STARTS HER ENGINE TO...

**8 March** is a date to celebrate the achievements of women. As a woman you wake up every day to achieve yourself: you start your engine to attain the goals you have set to yourself, to grow, to explore and so much more! On your day, **we wish you courage** to keep on starting your engine for more adventures in life.

[Check out the reasons why the women at Total Liban start their engine!](#)

