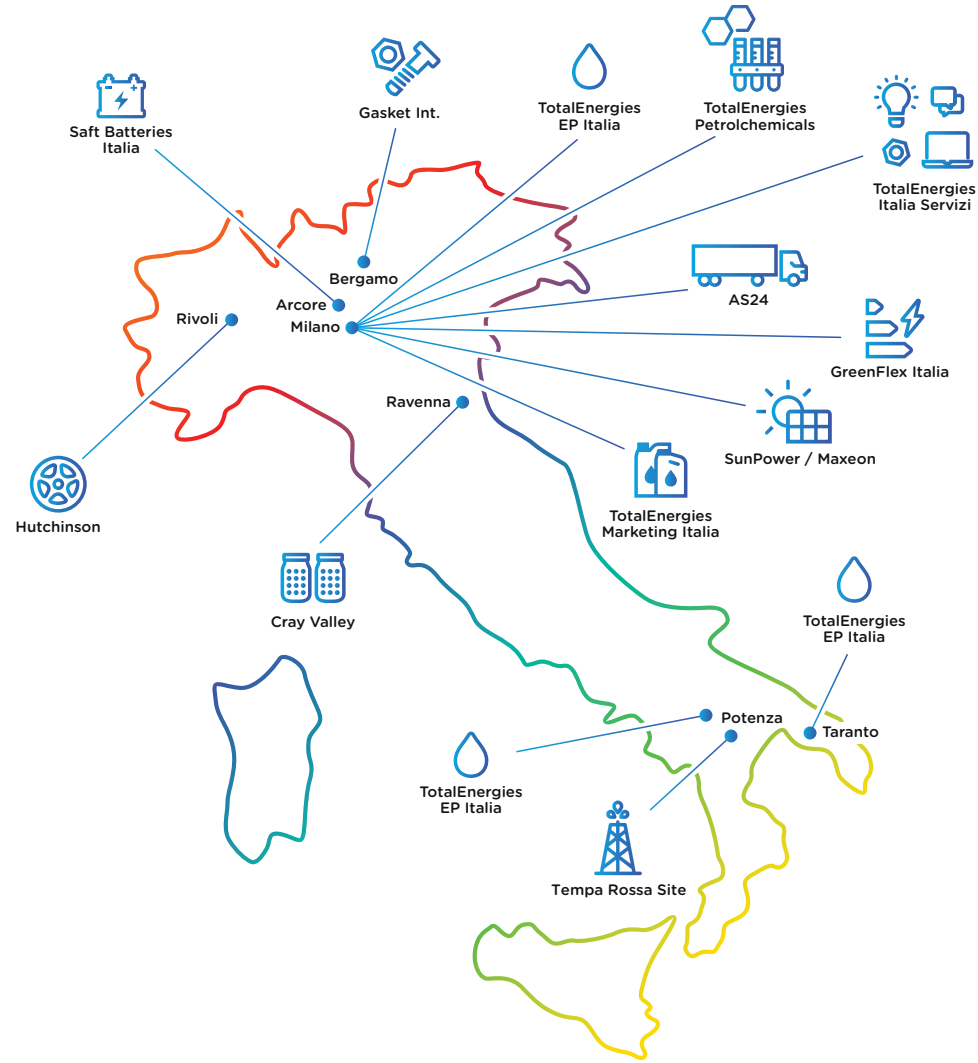


TotalEnergies in Italy

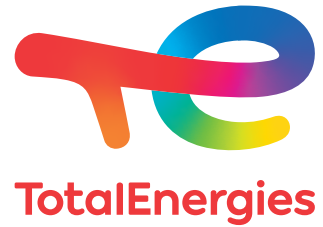


Over **500** employees

TotalEnergies is a broad energy company that produces and markets energies on a global scale: **oil and biofuels, natural gas and green gases, renewables and electricity.**

Our **100,000 employees** are committed to energy that is ever more affordable, cleaner, more reliable and accessible to as many people as possible.

Active in more than **130 countries**, TotalEnergies puts **sustainable development** in all its dimensions at the heart of its projects and operations to contribute to the **well-being of people.**



TotalEnergies EP Italia S.p.A.

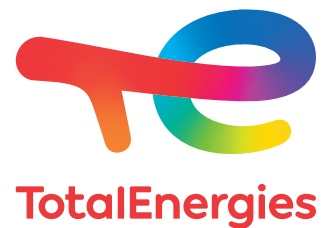
Via Rombon, 11
20134 Milan (MI)

Tel: +39 02 540681

www.ep.totalenergies.it



Our energy for the development of the South



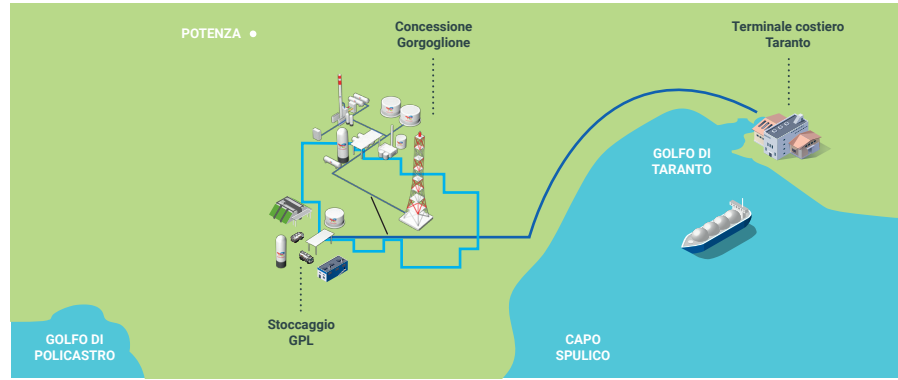
A multienergy Company

Our ambition: to become a global player in energy transition

<p>Operating in over 130 countries</p>	<p>2nd Company worldwide for the production of liquefied natural gas</p>	<p>2.8 Mboe*/day produced in 2021 of which 54% natural gas</p> <p><small>* Barrels of oil equivalent</small></p>	<p>100 thousand collaborators</p>
<p>> 3 billion invested in renewables and electricity in 2021</p>	<p>> 100 GW of production capacity for renewable electricity by 2030</p>	<p>30% circular polymers by 2030</p>	<p>Over 4 thousand researchers in our 18 R&D centers</p> <p><small>Data: June 2022</small></p>
<p>1 billion invested in R&D, 50% of which for decarbonisation solutions</p>	<p>To preserve the planet against climate challenges, we are committed to producing new energies:</p>		



Tempa Rossa



The Joint Venture Tempa Rossa partners



50%
TotalEnergies

25%
Shell

25%
MEPIT
Mitsui E&P Italia B S.p.A.

Our Founding Values Environment, Safety and Ethics



Safety of people
and operations



Ethics and
anti-corruption



Constant monitoring and
environmental protection

Environmental monitoring on Tempa Rossa

51
fixed
monitoring
stations 24/7

500
periodic
monitoring
stations

Monitoring extended to the
entire Gorgoglione Concession

Monitoring of flora, fauna,
and ecosystems

Data available on the website
and the Tempa Rossa App

The highest oil centre in Europe in Corleto Perticara

The hydrocarbons extracted from the wells are treated and separated into different products: **crude oil, methane gas, LPG, and sulphur**. The treatment of water, either reservoir or rainwater, complies with the most stringent national and industry standards. Tempa Rossa guarantees a 40% increase in national oil production.

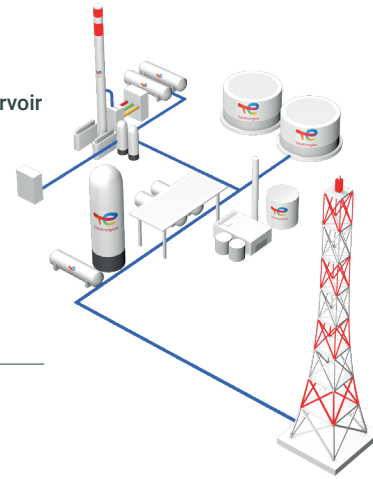
Daily plant capacity:

Natural gas
230 thousand m³

Oil
50 thousand barrels

LPG
240 tonnes

Sulphur
75 tonnes



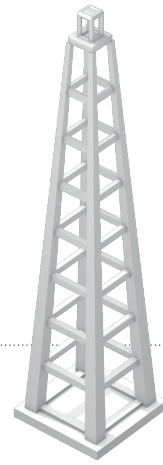
Gorgoglione 2, the deepest well in Italy

6
wells

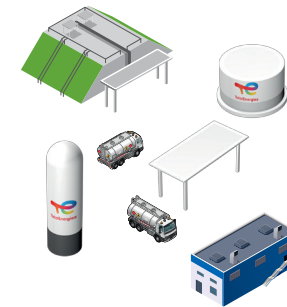
with a vertical depth
from 5,000 to 7,148 mt

Cutting-edge technology

like horizontal drains
and Dual ESP submersible
pumps



The LPG storage centre in Guardia Perticara



LPG separated at the Oil
Centre is sent by pipeline
to the LPG Centre where
it is stored in suitable
underground tanks in
compliance with national
and sector regulations.

From the LPG Centre,
the product is loaded onto
tankers through special
loading bays and intended
to vehicle refuelling stations.

3
loading bays

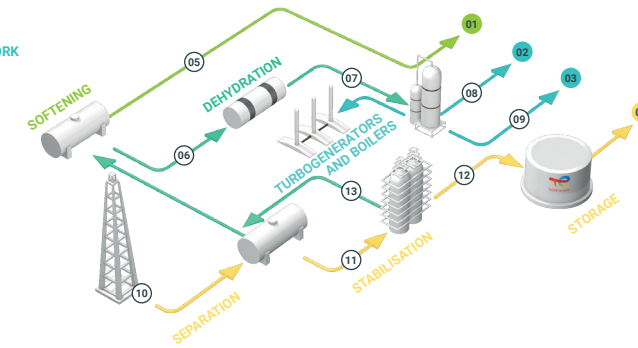
2
underground tanks

3 thousand m³
total capacity

Oil and gas treatment process

The Oil Centre is equipped with an acid gas treatment section, separated from the crude oil extracted from the wells. Hydrogen sulphide (H₂S) and other gas sulphur compounds are transformed into liquid sulphur, with a conversion equal to 99.9%, minimising the environmental impact and the final emission of sulphure dioxide (SO₂) to the chimney. A remarkable technology achievement in order that production targets can ensure environmental respect and protection.

- 01 EXPORT WITH TANKERS
- 02 CONNECTION TO THE SNAM NETWORK
- 03 LPG STORAGE CENTRE
- 04 OLEODUCT SOM
- 05 sulphur
- 06 softened gas
- 07 dried gas
- 08 LPG
- 09 methane
- 10 6 oil wells
- 11 oil
- 12 stabilised oil
- 13 gas-H₂S

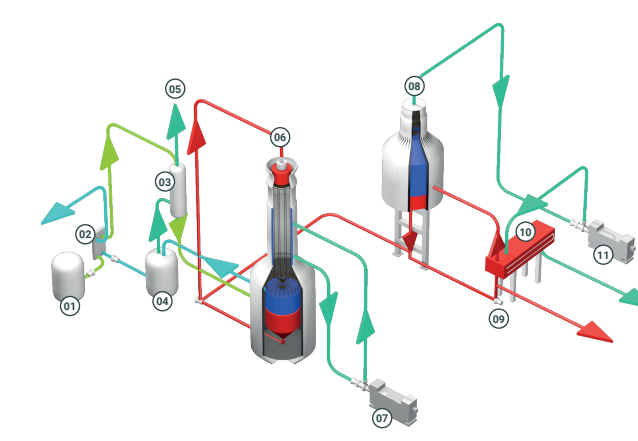


Innovative water treatment

When crude oil is extracted from the well, the presence of reservoir water, also defined as production water, can occur. A water treatment plant using advanced evaporation and zero liquid discharge technology has been built to recycle up to 93% of the production water. Thanks to ZLD crystallisers, the production water is demineralised and then re-used within the site. Brackish water residual is concentrated in salt crystals and then disposed of. ZLD technology makes it possible to comply with new national environmental regulations governing the discharge of water. However, no water is discharged from the oil centre for at least the first 5 years, but is 100% recycled. Then, appropriate solutions will be developed on the basis of the data acquired on the reservoir and oil centre.

- 01 STEAM
- 02 CONCENTRATED BRACKISH WATER
- 03 BRACKISH WATER SUPPLY
- 04 DISTILLED CONDENSED

- 01 feed tank
- 02 heat exchanger
- 03 deaerator
- 04 distillate tank
- 05 outlet
- 06 evaporator of brackish water
- 07 mechanical steam compressor
- 08 steam crystalliser
- 09 recycle pump
- 10 brackish water heater
- 11 outlet



Social responsibility



Investments implemented for local communities

The Tempa Rossa Joint Venture is dedicated to carrying out projects with high social value, mainly in the following areas: biodiversity protection, training of young people, transparency, and communication with local communities, promotion of the artistic and cultural heritage, solidarity, support for economic and social development.

Ongoing initiatives

Training, business support, school
and university projects, research.

Benefits for the Region in addition to royalties



1.2 billion

cubic metres of natural gas provided free
of charge to the Basilicata Region

25
million/€

over 5 years
for sustainable
development
projects in the
region

25
million/€

over 5 years
for the direct
implementation
of projects for
green and circular
economy

80% employees in the South at the Tempa Rossa site

170
TotalEnergies
employees
on site



430
specialised
employees
of contracting
companies

1,000
employees
in the supply chain